

# INSTRUCTION MANUAL



Approvals



## ETH-ROUTER Industrial ethernet router

Part Number: ETH-ROUTER1V4CAI-4G

REV012725



- EN** To download the digital version of this instruction manual and to check other available languages scan the following QR code.
- ES** Para descargar la versión digital de este manual de instrucciones y consultar otros idiomas disponibles, escanee el siguiente código QR.
- PT** Para baixar a versão digital deste manual de instruções e verificar outros idiomas disponíveis, escaneie o seguinte código QR.
- FR** Pour télécharger la version numérique de ce manuel d'instructions et pour vérifier les autres langues disponibles, scannez le code QR suivant.
- DE** Um die digitale Version dieser Bedienungsanleitung herunterzuladen und andere verfügbare Sprachen zu überprüfen, scannen Sie den folgenden QR-Code.
- RU** Чтобы загрузить цифровую версию данного руководства по эксплуатации и проверить другие доступные языки, отсканируйте следующий QR-код.
- ZH** 要下載本說明手冊的數字版本並查看其他可用語言，請掃描以下二維碼。



# TABLE OF CONTENTS

---

CUSTOMER SAFETY RESPONSIBILITIES.....	4
PRODUCT OVERVIEW .....	7
DIMENSIONS .....	8
INSTALLATION .....	8
SPECIFIC CONDITIONS OF USE .....	10
ELECTRICAL CONNECTION.....	10
TESTING AND MAINTENANCE .....	13
PRODUCT WARRANTY.....	15

## CUSTOMER SAFETY RESPONSIBILITIES

---

4B appreciates your business and is pleased you have chosen our products to meet your needs.

Please read in its entirety and understand the literature accompanying the product before you place the product into service. Please read the safety precautions carefully before operating the product. With each product you purchase from 4B, there are some basic but important safety considerations you must follow to be sure your purchase is permitted to perform its design function and operate properly and safely, giving you many years of reliable service. Please read and understand the Customer Safety Responsibilities listed below. Failure to follow this safety directive and the Operation Manuals and other material furnished or referenced, may result in serious injury or death.

### **SAFETY NOTICE TO OUR CUSTOMERS**

- A. In order to maximize efficiency and safety, selecting the right equipment for each operation is vital. The proper installation of the equipment, and regular maintenance and inspection is equally important in continuing the proper operation and safety of the product. The proper installation and maintenance of all our products is the responsibility of the user unless you have asked 4B to perform these tasks.
- B. All installation and wiring must be in accordance with Local and National Electrical Codes and other standards applicable to your industry. (Please see the article “Hazard Monitoring Equipment Selection, Installation and Maintenance” at [www.go4b.com/usa](http://www.go4b.com/usa)). The installation of the wiring should be undertaken by an experienced and qualified professional electrician. Failure to correctly wire any product and/or machinery can result in the product or machine failing to operate as intended, and can defeat its design function.
- C. Periodic inspection by a qualified person will help assure your 4B product is performing properly. 4B recommends a documented inspection at least annually and more frequently under high use conditions.
- D. Please see the last page of this manual for all warranty information regarding this product.

# CUSTOMER SAFETY RESPONSIBILITIES

## **1. READ ALL LITERATURE PROVIDED WITH YOUR PRODUCT**

Please read all user, instruction and safety manuals to ensure that you understand your product operation and are able to safely and effectively use this product. If the equipment is used in a manner not specified in this manual, the protection provided by the equipment may be impaired.

## **2. YOU BEST UNDERSTAND YOUR NEEDS**

Every customer and operation is unique, and only you best know the specific needs and capabilities of your operation. Please call the 24-hour hotline at 309-698-5611 for assistance with any questions about the performance of products purchased from 4B. 4B is happy to discuss product performance with you at any time.

## **3. SELECT A QUALIFIED AND COMPETENT INSTALLER**

Correct installation of the product is important for safety and performance. If you have not asked 4B to perform the installation of the unit on your behalf, it is critical for the safety of your operation and those who may perform work on your operation that you select a qualified and competent electrical installer to undertake the installation. The product must be installed properly to perform its designed functions. The installer should be qualified, trained, and competent to perform the installation in accordance with Local and National Electrical Codes, all relevant OSHA Regulations, as well as any of your own standards and preventive maintenance requirements, and other product installation information supplied with the product. You should be prepared to provide the installer with all necessary installation information to assist in the installation.

## **4. ESTABLISH AND FOLLOW A REGULAR MAINTENANCE AND INSPECTION SCHEDULE FOR YOUR 4B PRODUCTS**

You should develop a proper maintenance and inspection program to confirm that your system is in good working order at all times. You will be in the best position to determine the appropriate frequency for inspection. Many different factors known to the user will assist you in deciding the frequency of inspection. These factors may include but are not limited to weather conditions; construction work at the facility; hours of operation; animal or insect infestation; and the real-world experience of knowing how your employees perform their jobs. The personnel or person you select to install, operate, maintain, inspect or perform any work whatsoever, should be trained and qualified to perform these important functions. Complete and accurate records of the maintenance and inspection process should be created and retained by you at all times.

## 5. RETAIN AND REFER TO THE OPERATION MANUAL FOR 4B'S SUGGESTED MAINTENANCE AND INSPECTION RECOMMENDATIONS

As all operations are different, please understand that your specific operation may require additional adjustments in the maintenance and inspection process essential to permit the monitoring device to perform its intended function. Retain the Operation Manual and other important maintenance and service documents provided by 4B and have them readily available for people servicing your 4B equipment. Should you have any questions, please call the 24-hour hotline number 309-698-5611, contact your local distributor, or use one of the contact ways available in our website [www.go4b.com/usa](http://www.go4b.com/usa).

## 6. SERVICE REQUEST

If you have questions or comments about the operation of your unit or require the unit to be serviced please call the 24-hour hotline number 309-698-5611, contact your local distributor, or use one of the ways available in our website [www.go4b.com/usa](http://www.go4b.com/usa). Please have available product part numbers, serial numbers, and approximate date of installation. In order to assist you, after the product has been placed into service, complete the online product registration section which is accessed via our website [www.go4b.com/usa](http://www.go4b.com/usa).

### **WARNING**



Moving parts can crush and cut.

Lockout power before removing guard or servicing.

Do NOT operate with guard removed.

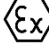


## PRODUCT OVERVIEW

4G Router to connect 4B's Hazard Monitoring Systems to Hazardmon via 4G Data SIM or Wi-Fi

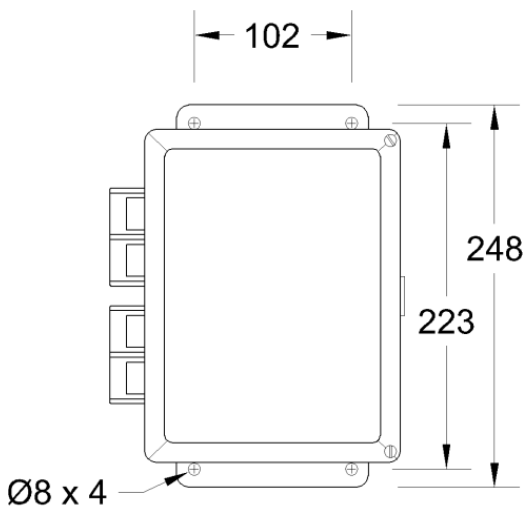
Features include:

- 4G/LTE up to 150 Mbps Download and 50 Mbps Upload. 4G/LTE (Cat 4), 3G, 2G
- 4 RJ45 Ports (3 x LAN, 1 x WAN)
- Dual SIM: With auto failover, backup WAN and other switching scenarios

## SPECIFICATIONS

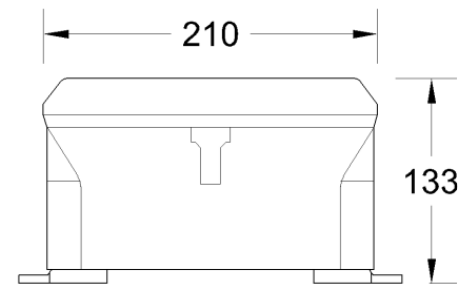
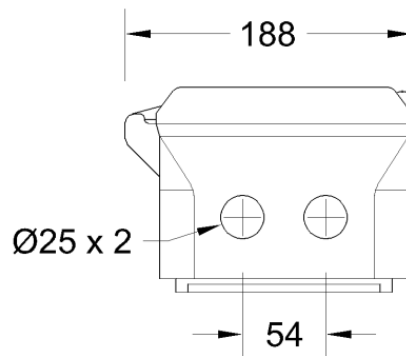
Supply Voltage	24VDC
Width	188 mm (7.4 in.)
Depth	102 mm (4 in.)
Height	246 mm (9.7 in.)
Protection	IP66
Mobile	4G/LTE (Cat 4), 3G, 2G
CPU	Mediatek, 580 MHz, MIPS 24KEc
Storage	16 MB Flash
Memory	128 MB RAM
SIM	2 x External SIM holders (2FF)
Antenna connectors	2 x SMA for mobile, 2 x RP-SMA for WiFi
Ethernet	4 x 10/100 Ethernet ports: 1 x WAN (configurable as LAN), 3 x LAN
WiFi	IEEE 802.11b/g/n, Access point (AP), Station (STA)
Approvals	ATEX / UKEX - DE24.0001X  II 3D Ex tc IIIC T125° Dc IP66 T <sub>AMB</sub> -20°C to +45°C  0598 SGS Fimko  CA1180 SGS Baseefa

## DIMENSIONS



### NOTE:

ALL DIMENSIONS IN MM



## INSTALLATION

### ENCLOSURE INSTALLATION -

1. Use the correct cable, glands and sealing arrangement in accordance to local installation codes.
2. Where other certified components are used as part of the assembly or installation procedure, the user must take in to account any limitations which might be listed on the relevant certificates.
3. The box is supplied with 2 x 25mm pre drilled holes in the bottom face. All unused entry apertures must be sealed using component certified stopping plugs.

NOTE: Special Consideration when installed in a Class II environment: In order to connect conduit

to the control unit enclosure, use a CSA and/or UL certified Class II conduit hub (for example, a Myers™ hub) with a suitable bonding (grounding) connection that is rated for the installation environment.

4. The enclosure must not be modified in any way, as this will invalidate the certification.
5. All wiring must be carried out in accordance with relevant codes of practice and / or instructions.

NOTE: Special Consideration when installed in a Class II environment: Power input and output



(I/O) wiring shall be in accordance with Class II wiring methods per the National Electrical Code (NFPA70) for installations within the US and per the Canadian Electrical Code (CEC) for installations in Canada. ATEX/IECEX need to consider EN/IEC 60079-14.

6. The voltage, current and maximum power dissipation on the units label must not be exceeded.

7. The wiring installation must extend to within 1 mm of the metal face of the terminal, and all leads

must be insulated for the appropriate voltage.

8. Not more than one or multiple strand cable is to be connected to any terminal unless multiple

conductors have previously been joined in a suitable manner (e.g. boot lace ferrule) such that they

present a single connection point to the terminal.

9. The power terminals use a screwless push in spring design, a small flat-head or straight screwdriver can be used to gently push in the tab to terminate the power wires.

10. The equipment shall be earth bonded via earth bonded screw marked with the Earth label inside

the equipment.

#### ENVIRONMENTAL CONDITIONS -

Unit can be used in outdoor locations, Ambient temperature and IP NEMA ratings should be considered.

Product altitude is limited to 2000m above sea level. Humidity 0-100% RH, non-condensing.

## SPECIFIC CONDITIONS OF USE

---

- 1.The equipment shall be suitably earth bonded via the PCB mounted terminal inside the equipment enclosure.
- 2.Warning: The equipment is a potential static hazard, clean only with a damp cloth.
- 3.Do not allow dust to build up on the equipment.
- 4.When the enclosure fitted with sensor circuits also includes an output supply to power external devices the output supply cables shall be 2.5mm<sup>2</sup> maximum with a maximum of 24V DC and 1A maximum per terminal. For smaller conductors the current shall be reduced accordingly (0.4A/mm<sup>2</sup> max). The external device shall be suitably protected.

## ELECTRICAL CONNECTION

---

All wiring must be in accordance with local and national electrical codes and should be undertaken by

an experienced and qualified electrician. All equipment should be properly grounded prior to operation.

Additional wire used during the installation must have a temperature rating of 158° F (70° C) or above, and be at least 24 AWG. 4B recommends using shielded cable to reduce electromagnetic interference (EMI) to maintain signal integrity. Never run low voltage cables in the same conduit as three phase motor cables.

Use rigid metal conduit to protect the cables coming into the Ethernet Switch. Conduit systems can channel water due to ingress and condensation which over time will adversely affect the performance of the system. As such, the installation of low point conduit drains is recommended.

All electrical connections are shown in image 1.



Image 1

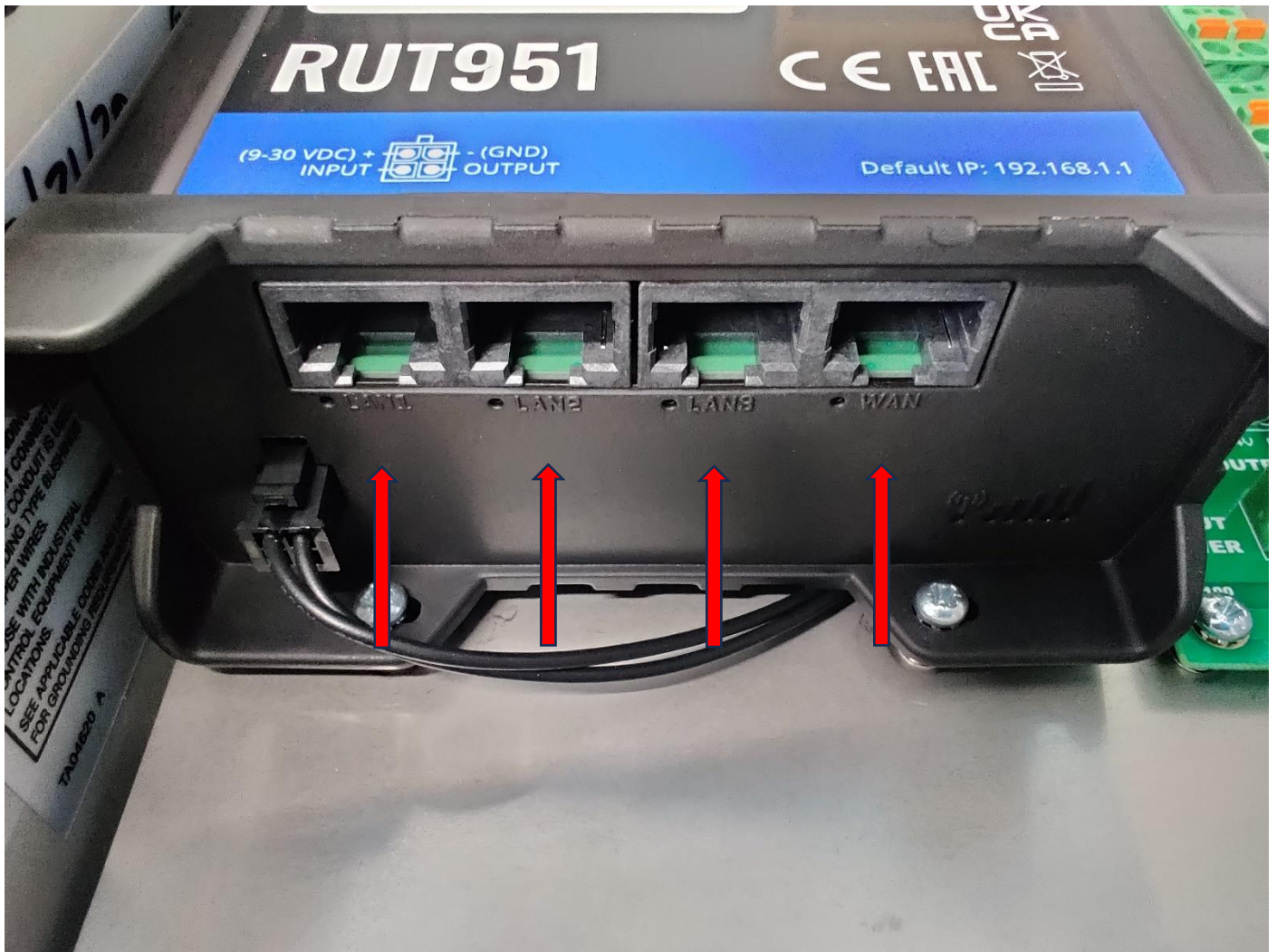


Image 2 – LAN & WAN Ports

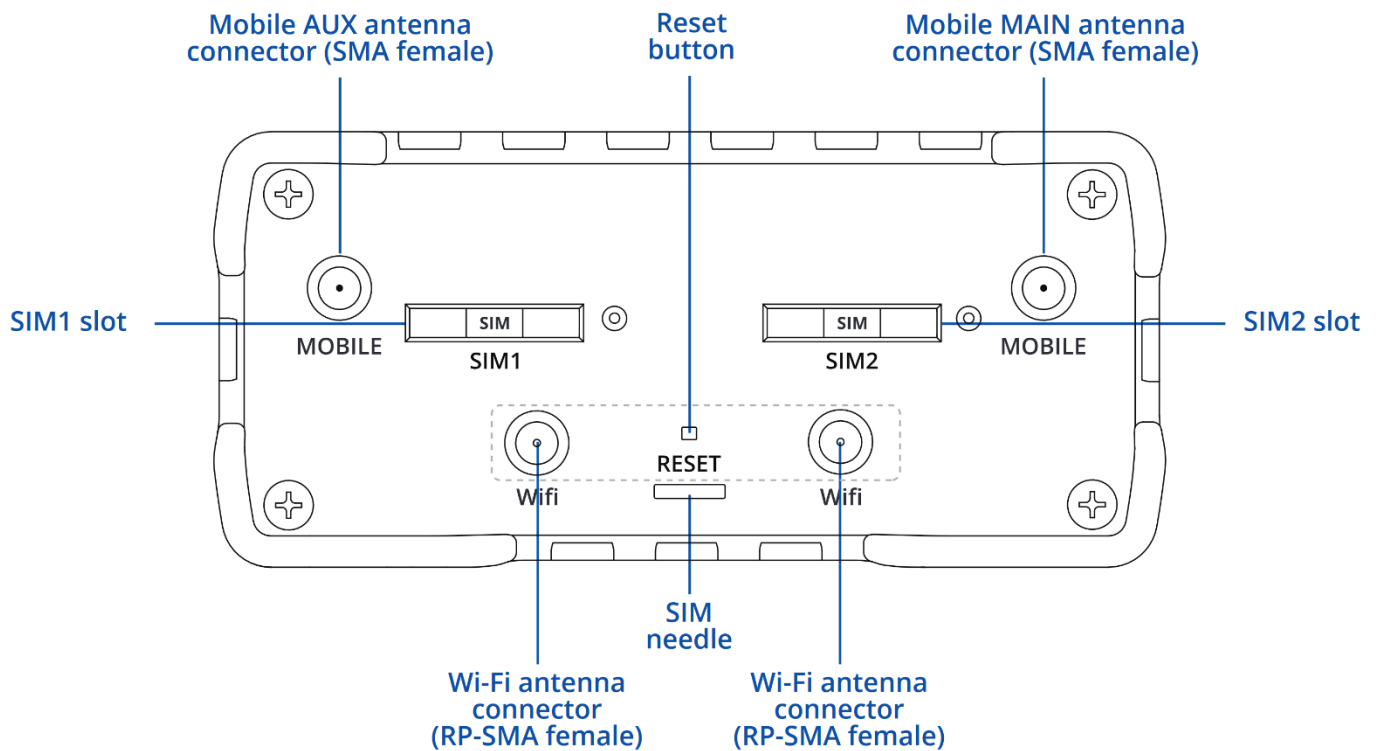


Image 3

## TESTING AND MAINTENANCE

---

Below is the procedure that the end user must adhere to in order to maintain the system in a safe state.

1. Inspect that all the cabling is in good state and that all the electrical connections, including the terminal blocks in the junction boxes are secure and in good order.
2. Make sure there is no water damage to the inside of the enclosure or any junction boxes used.
3. Verify that the LED marked POWER is illuminated red.

For a full manual, please go to:

[https://wiki.teltonika-networks.com/view/RUT951\\_Manual](https://wiki.teltonika-networks.com/view/RUT951_Manual)



## **1. EXCLUSIVE WRITTEN LIMITED WARRANTY**

All products sold are warranted by the company 4B Components Limited and 4B Braime Components Limited herein after referred to as 4B to the original purchaser against defects in workmanship or materials under normal use for one (1) year after date of purchase from 4B. Any product determined by 4B at its sole discretion to be defective in material or workmanship and returned to a 4B branch or authorized service location, as 4B designates, shipping costs prepaid, will be, as the exclusive remedy, repaired or replaced at 4B's option.

## **2. DISCLAIMER OF IMPLIED WARRANTY**

No warranty or affirmation of fact, expressed or implied, other than as set forth in the exclusive written limited warranty statement above is made or authorized by 4B. 4B specifically disclaims any liability for product defect claims that are due to product misuse, abuse or misapplications, as authorized by law, 4B specifically disclaims all warranties that the product is fit or merchantable for a particular purpose.

## **3. NO WARRANTY "BY SAMPLE OR EXAMPLE"**

Although 4B has used reasonable efforts to accurately illustrate and describe the products in its catalogs, literature, and websites, such illustrations and descriptions are for the sole purpose of product identification and do not express or imply a warranty affirmation of fact, of any kind or a warranty or affirmation of fact that the products will conform to their respective illustrations or descriptions. 4B expressly disclaims any warranty or affirmation of fact, expressed or implied, other than as set forth in the exclusive written limited warranty statement above, including, without limitation, the implied warranties of merchantability and fitness for a particular purpose.

## **4. LIMITATION OF DAMAGES**

Any liability for consequential, incidental, special, exemplary, or punitive damages, or for loss of profit, whether direct or indirect, is expressly disclaimed.

4B is the worldwide leading manufacturer of high-quality, technologically advanced material handling and electronic components.



## 4B Locations Around the World



### USA

4B Components Ltd.  
625 Erie Avenue  
Morton, IL 61550  
Tel: +1 (309) 698-5611

### France

4B France  
35 bis, rue du 8 mai 1945,  
Villers Bretonneux, F-80800  
Tel: +33 (0) 3 22 42 32 26

### Australia

4B Australia  
Building 1, 41 Bellrick St,  
Acacia Ridge 4110,  
Queensland  
Tel: +61 (0)7 3216 9365

### United Kingdom

4B Braime Components Ltd.  
Hunslet Road  
Leeds, LS10 1JZ  
Tel: +44 (0) 113 246 1800

### Germany

4B Deutschland  
35 bis, rue du 8 mai 1945,  
Villers Bretonneux, F-80800  
France  
Tel: +49 (0) 2333 601681

### China

4B China  
F1, Building 5A,  
8 West Lake Road Wujin High &  
New Technology Develop. Zone  
Changzhou 213164  
Jiangsu Province  
Tel: +86-136 0160 9266

### Thailand

4B Asia Pacific  
Build No.899/1 Moo 20  
Soi Chongsiri, Bangplee-Tam Ru Road  
Tanbon Bangpleeyai, Amphur Bangplee  
Samutprakarn 10540  
Tel: +66 (0) 2 173-4339

### South Africa

4B Africa  
14 Newport Business Park  
Mica Drive, Kya Sand  
2163 Johannesburg  
Tel: +27 (0) 11 708 6114

### United Arab Emirates

4B Braime Components Limited  
Sharjah International Airport Free Zone  
Saif Zone, Y Building, Office no. Y-44A  
P.O Box: SHJ-0., UAE reg. no. 23784  
Tel: +971 (0) 6 5212 044