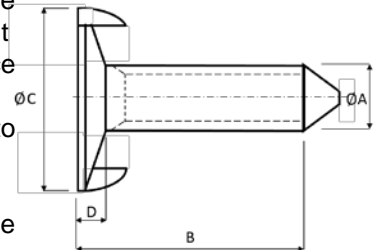


# Fang Bolt

*BETTER BY DESIGN*


## Fang Bolt

- ▶ Fangs bite into belt, locking the bolts in place while nut is tightened to ease the fitting and removal of nut
- ▶ Large bolt head diameter gives maximum resistance to pull through
- ▶ Flat bolt head reduces the risk of bolt rip out due to head protruding from back of belt
- ▶ Pointed tip to ease fitting
- ▶ High bolt torque rating dependent on bucket type and belt size
- ▶ Suitable for installation with plastic buckets



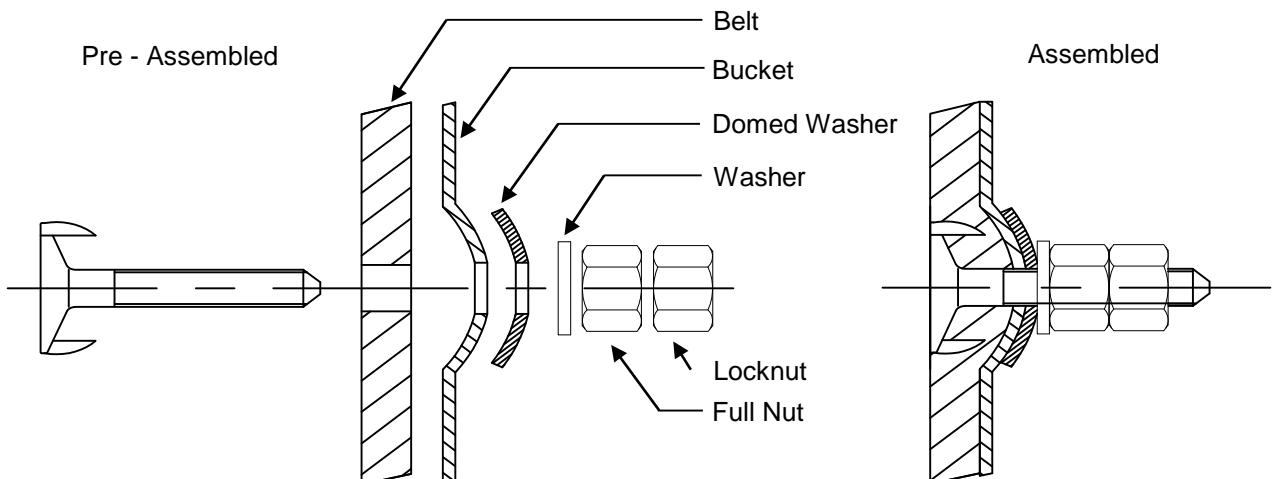
### Fang Bolt Manufactured Sizes and Lengths

Ref.	ØA Head - ØC (Ø mm)	D	Nominal Bolt Torque (Nm)	Bolt Length - B						
				20 mm	25 mm	30 mm	35mm	40 mm	45 mm	80 mm
M6	25	3.6	11	1.56	1.82					
M8	30	3.9	27		2.74	3.14		3.42		
M10	35	4.1	47			4.62	4.90	5.26	5.14	5.24

Bolt, hex nut, small washer (boxed/100) – Weight KG/100

### Fang Bolt Installation Guide

- ▶ Steel buckets with recessed holes install with domed washer
- ▶ Plastic buckets and steel buckets with flat holes install with fender washer



### Fang Bolt Assembly Guide

- ▶ Belt types, strengths and thickness affect the torque required to assemble the belts - allowance for this should always be considered
- ▶ The bolt should be tightened so the head of the bolt is just below the top cover of the belt (where possible). This ensures that the head pulley drives against the belt and not the bolts
- ▶ If you have any queries please contact our technical team at [4b-uk@go4b.com](mailto:4b-uk@go4b.com) or call +44(0) 113246 1800

Information subject to change or correction. Aug 2017