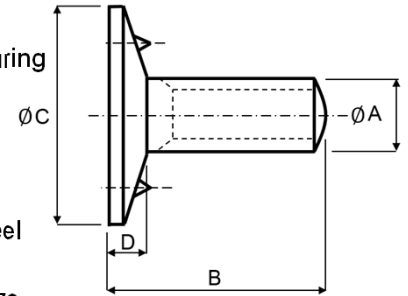


# Euro Bolt

## Improved above DIN 15237 – Steel/Stainless Steel



- ▶ ISO grade 5.8 steel exceeds DIN 15237
- ▶ Concave head and 2 lugs to prevent rotation during tightening
- ▶ Large bolt head diameter
- ▶ Fully threaded
- ▶ Supplied zinc plated and clear passivated
- ▶ Available in low carbon steel, 304 and 316 stainless steel
- ▶ Available with Allen Key bolt head
- ▶ Bolt torque rating dependent on bucket type and belt size



### Euro Bolt Manufactured Sizes and Lengths

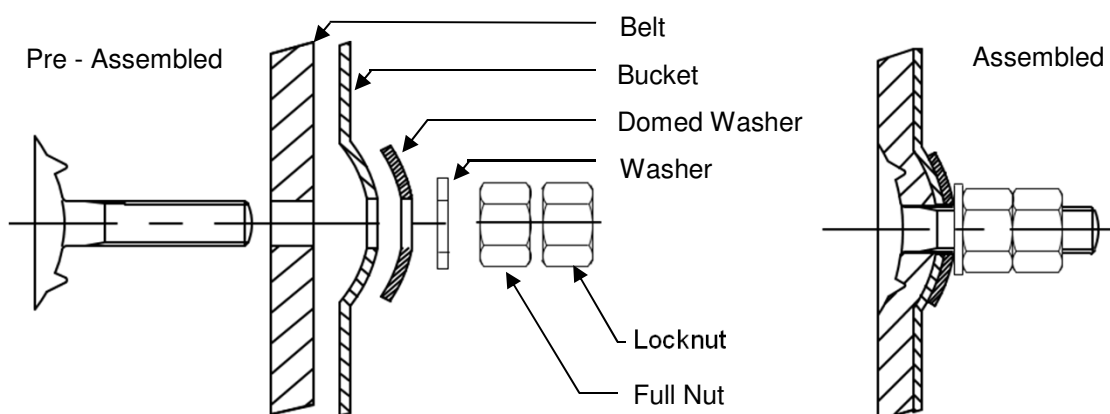
ØA Ref.	Head - Ø C (Ø mm)	D	Nominal Bolt Torque (Nm)	Bolt Length - B									
				20 mm	25 mm	30 mm	35 mm	40 mm	45 mm	50 mm	60 mm	70 mm	
M6	21	3.9	5 - 8	1.28	1.38	1.50							
M7	23	4.3	10 - 13	1.82	2.10	2.16	2.22						
M8	28   25**	5.4	15 - 20	2.98	3.00	3.02	3.37	3.72	3.88	3.94			
M10	35   31**	5.9	35 - 36		5.42	5.43	5.44	5.84	6.02	6.18			
M12	42	6.8	60 - 65					9.24		9.92	10.72	5.60	

Bolt, hex nut, small washer (boxed/100) – Weight KG/100

\*\*Stainless Steel

### Euro Bolt Installation Guide

- ▶ Steel buckets with recessed holes install with domed washer
- ▶ Plastic buckets and steel buckets with flat holes install with fender washer



### Euro Bolt Assembly Guide

- ▶ Belt types, strengths and thickness affect the torque required to assemble the belts - allowance for this should always be considered
- ▶ The bolt should be tightened so the head of the bolt is just below the top cover of the belt (where possible). This ensures that the head pulley drives against the belt and not the bolts
- ▶ If you have any queries please contact our technical team at [4b-uk@go4b.com](mailto:4b-uk@go4b.com) or call +44(0) 113246 1800

Information subject to change or correction. Aug 2019