

# DROP FORGED CHAIN



4B's drop forged chain is made of special heat treated alloy steel, case hardened to Rockwell C57 - C62 with a ductile core hardness of Rockwell C40.

4B's superior heat treatment technique provides the optimum chain link with a more resilient ductile core for shock resistance, and an extremely hard exterior surface for superior wear resistance.

4B's drop forged chain is backed by an international network of companies with over 125 years of experience, and a global team of engineers and sales professionals that can provide you with practical solutions for all your material handling applications.



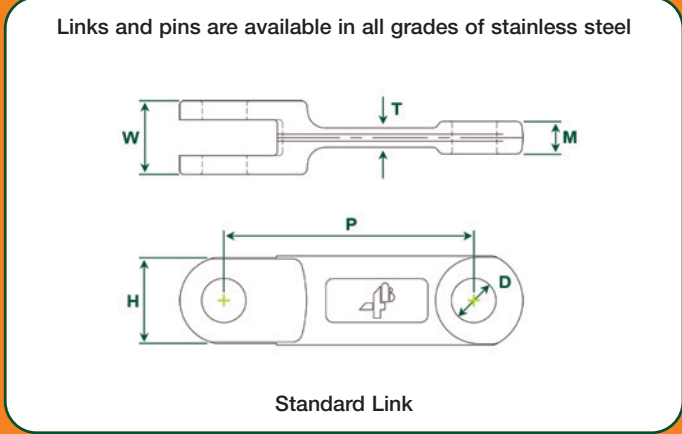
www.go4b.com

## Drop Forged Chain



Standard Link

Bolt 'N' Go Link



Chain Link	Min Breaking Load (kN) (lb)		Case Hardness	Case Depth (mm)	Core Hardness	Weight (Per Link) (kg)	Bolt 'N' Go Compatible	Dimensions					
								P (mm)	H (mm)	T (mm)	W (mm)	M (mm)	D (mm)
<b>NEW</b> 4B102LA	150	33,750	Rockwell C57-C62	0.5	Rockwell C40	0.36	No	102	36	6	25	8	14
4B102NA	180	40,400	Rockwell C57-C62	0.5	Rockwell C40	0.38	Yes	102	36	7	28	12	14
4B125NA	200	44,900	Rockwell C57-C62	0.6	Rockwell C40	0.70	Yes	125	35	10	36	15	16
<b>NEW</b> 4B142LA	250	56,250	Rockwell C57-C62	0.7	Rockwell C40	0.66	No	142	40	10	31	14	18.2
4B142NA	300	67,500	Rockwell C57-C62	0.7	Rockwell C40	1.08	Yes	142	50	12	42	18.7	25
4B142HA	450	101,000	Rockwell C57-C62	0.7	Rockwell C40	1.76	Yes	142	50	16.5	62	28.5	25
4B150NA	300	67,500	Rockwell C57-C62	0.7	Rockwell C40	1.20	Yes	150	49	13	36	15	25
4B160NA	350	78,700	Rockwell C57-C62	0.8	Rockwell C40	1.30	Yes	160	44.5	13	42	19.5	20
4B175NA	520	117,500	Rockwell C57-C62	1.0	Rockwell C40	2.73	No	175	60	16	72	22	30
4B200NA	600	135,000	Rockwell C57-C62	1.0	Rockwell C40	2.85	Yes	200	60	18	68	30	30
4B216NA	600	135,000	Rockwell C57-C62	1.0	Rockwell C40	3.66	No	216	75	19	59	26	35
4B250NA	700	158,000	Rockwell C57-C62	1.0	Rockwell C40	4.26	No	250	75	18	70	32	32
4B260NA	700	158,000	Rockwell C57-C62	1.0	Rockwell C40	5.38	No	260	75	21	71	31	32

# BOLT 'N' GO™

PATENTED

The Bolt 'N' Go flight system is a revolutionary assembly method for drop forged chain. Link and flight assembly is made easy by using a standard bolt and mechanical lock nut with a high strength, heat treated hollow pin. There are no circlips and no intricate assembly is required. There is no welding of flights, no need to remove chain from the conveyor for installation, and no issues with strength. Just bolt the links and the flights together. It's easy, simple and reliable!

## Forged Chain



Detailed View of Bolt 'N' Go Showing Assembly Method



Bolt 'N' Go System

Bolt 'N' Go Chain	Nylon Flight Maximum Width
4B102BNA	390 mm / 15.35 in
4B142BNA	752 mm / 29.60 in
4B142BHA	772 mm / 30.40 in

NOTE: 4B125BNA, 4B150BNA, 4B160BNA & 4B200BNA Chain also available, Contact 4B For More Information

Feed Mill Application using Bolt 'N' Go Chain with Nylon Flights



# WELDED FLIGHTS & PINS



www.go4b.com

FREE Engineering Design Service  
- Contact 4B

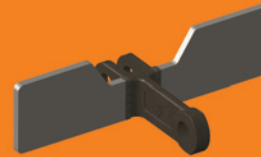
## TYPICAL WELDED FLIGHT ATTACHMENTS



Square Bar Flight



Flat Bar Flight



Paddle Flight



U Flight



Closed U Flight



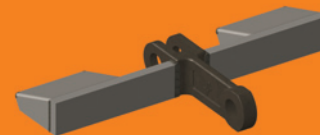
Closed U Flight with Filler Plates



OO Flight



OO Flight with Filler Plates



Return Cups

Note:  
Custom flights are available, based on customer specifications.

## STANDARD PIN OPTIONS

Note: Clamps, roll pins, hex bolts and lock nuts must not be re-used. Install one time and discard after use.

